



**Land Sales in Lincoln, Langlade and Marathon Counties From 1989 to 2006**

Spreadsheet Created by Tom Cadwallader, Agricultural Development Agent  
 Lincoln and Marathon County University of Wisconsin-Extension  
 (values in dollars per acre on land without buildings and improvements)  
 Data Source: Wisconsin Agricultural Statistics Service and Wisconsin Department of Revenue

**Land Continuing in Ag**

	1989	1990	1991	1992	1993	1994	1995	1996	1997	1998	1999	2000	2001	2002	2003	2004	2005	2006	2006-2005	% Change	2006-1989	% Change	Annual Rate
Lincoln	220	275	295	242	357	387	313	478	626	745	582	934	882	923	1199	1242	1561	1668	107	6.9%	1448	658.2%	12.7%
Marathon	405	411	619	429	540	536	476	559	643	845	913	939	1000	1160	1357	1483	1499	1895	396	26.4%	1490	367.9%	9.5%
Langlade	381	589	605	489	617	697	629	578	830	860	798	1017	1158	1304	1056	1380	1315	1782	467	35.5%	1401	367.7%	9.5%
Average	335	425	506	387	505	540	473	538	700	817	764	963	1013	1129	1204	1368	1458	1782	323	22.2%	1446	431.3%	10.3%

**Land Diverted from Ag**

	1989	1990	1991	1992	1993	1994	1995	1996	1997	1998	1999	2000	2001	2002	2003	2004	2005	2006	2006-2005	% Change	2006-1989	% Change	Annual Rate
Lincoln	253	201	255	370	354	412	525	444	680	814	1144	897	1081	1219	1386	1255	1361	1361	0	0.0%	1108	437.9%	10.4%
Marathon	464	467	473	340	499	521	529	968	1436	1118	1586	1073	1098	2099	2399	3284	2271	7992	5721	251.9%	7528	1622.4%	18.2%
Langlade	219	454	326	337	3301	568	463	473	931	655	896	829	1044	1198	1204	1097	1587	1717	130	8.2%	1498	684.0%	12.9%
Average	312	374	351	349	1385	500	506	628	1016	862	1209	933	1074	1505	1663	1879	1740	3690	1950	112.1%	3378	1082.7%	15.6%

**Total of All Ag Land**

	1989	1990	1991	1992	1993	1994	1995	1996	1997	1998	1999	2000	2001	2002	2003	2004	2005	2006	2006-2005	% Change	2006-1989	% Change	Annual Rate
Lincoln	227	257	286	274	356	396	367	478	642	785	1058	920	989	1070	1286	1248	1468	1668	200	13.6%	1441	634.8%	12.4%
Marathon	417	419	582	416	532	532	491	653	895	897	1047	985	1019	1481	1631	1998	1663	2834	1171	70.4%	2417	579.6%	11.9%
Langlade	376	568	586	472	756	691	625	563	839	788	821	928	1093	1289	1094	1292	1462	1768	306	20.9%	1392	370.2%	9.5%
Average	340	415	485	387	548	540	494	565	792	823	975	944	1034	1280	1337	1513	1531	2090	559	36.5%	1750	514.7%	11.3%

**Swamp and Wasteland/Undeveloped\***

	1989	1990	1991	1992	1993	1994	1995	1996	1997	1998	1999	2000	2001	2002	2003	2004	2005*	2006	2006-2005	% Change	2006-1989	% Change	Annual Rate
Lincoln	69	69	67	84	229	76	99	112	304	357	376	538	651	521	443	425	948	748	-200	-21.1%	679	984.1%	15.0%
Marathon	172	114	769	96	171	100	240	140	406	600	1234	620	1301	1613	881	900	1047	1256	209	20.0%	1084	630.2%	12.4%
Langlade	58	55	53	68	82	93	102	165	261	315	376	509	1121	490	566	695	939	834	-105	-11.2%	776	1337.9%	17.0%
Average	100	79	296	83	161	90	147	139	324	424	662	556	1024	875	630	673	978	946	-32	-3.3%	846	849.2%	14.2%

**Forest Land**

	1989	1990	1991	1992	1993	1994	1995	1996	1997	1998	1999	2000	2001	2002	2003	2004	2005	2006	2006-2005	% Change	2006-1989	% Change	Annual Rate
Lincoln	238	235	242	274	323	353	445	685	671	823	1170	1346	1254	1393	1485	1520	1642	1682	40	2.4%	1444	606.7%	12.2%
Marathon	322	322	366	458	410	585	567	661	893	1112	1559	1271	1394	1668	1723	1949	2570	2416	-154	-6.0%	2094	650.3%	12.6%
Langlade	260	261	273	336	403	384	412	505	812	843	978	1146	1181	1239	1332	1650	1873	1831	-42	-2.2%	1571	604.2%	12.2%
Average	273	273	294	356	379	441	475	617	792	926	1236	1254	1276	1433	1513	1706	2028	1976	-52	-2.6%	1703	623.0%	12.3%

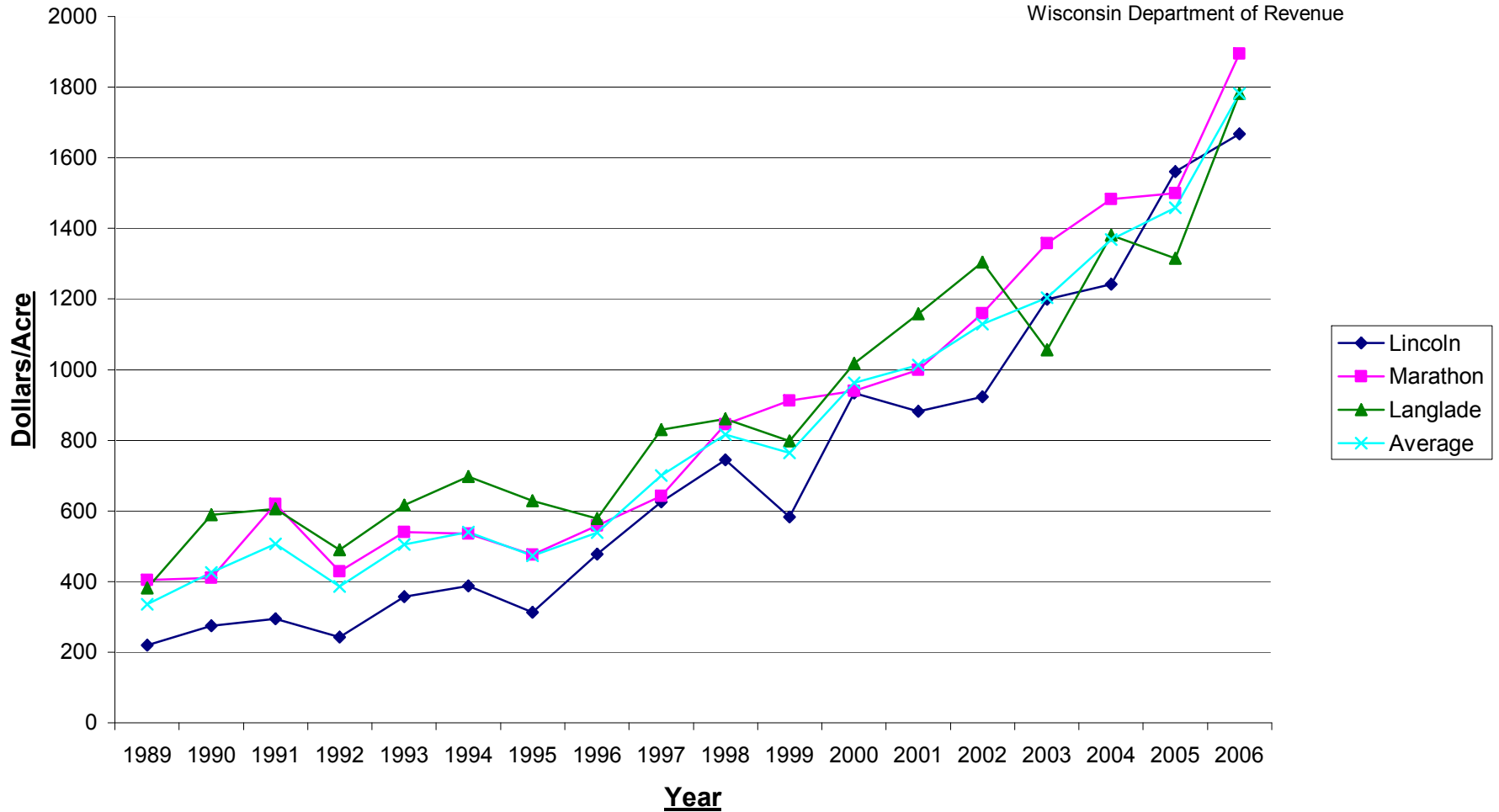
\* In 2005 the "Swamp and Wasteland" classifications was changed to "Undeveloped Land" and it included other minor classifications. In 2006 the "Swamp and Wasteland" classification was again reported.

University of Wisconsin, U.S. Department of Agriculture and Wisconsin Counties Cooperating. UW-Extension provides equal opportunities and employment and programming including Title IX and ADA

**CHART 1: 1989-2006 Sales of All Ag Land Without Buildings and Improvements That Continued in Agriculture In Lincoln, Marathon and Langlade Counties**



Created by Tom Cadwallader  
 Ag Development Agent  
 Lincoln and Marathon Counties  
 Utilizing data from Wisconsin Ag Statistics Service and  
 Wisconsin Department of Revenue

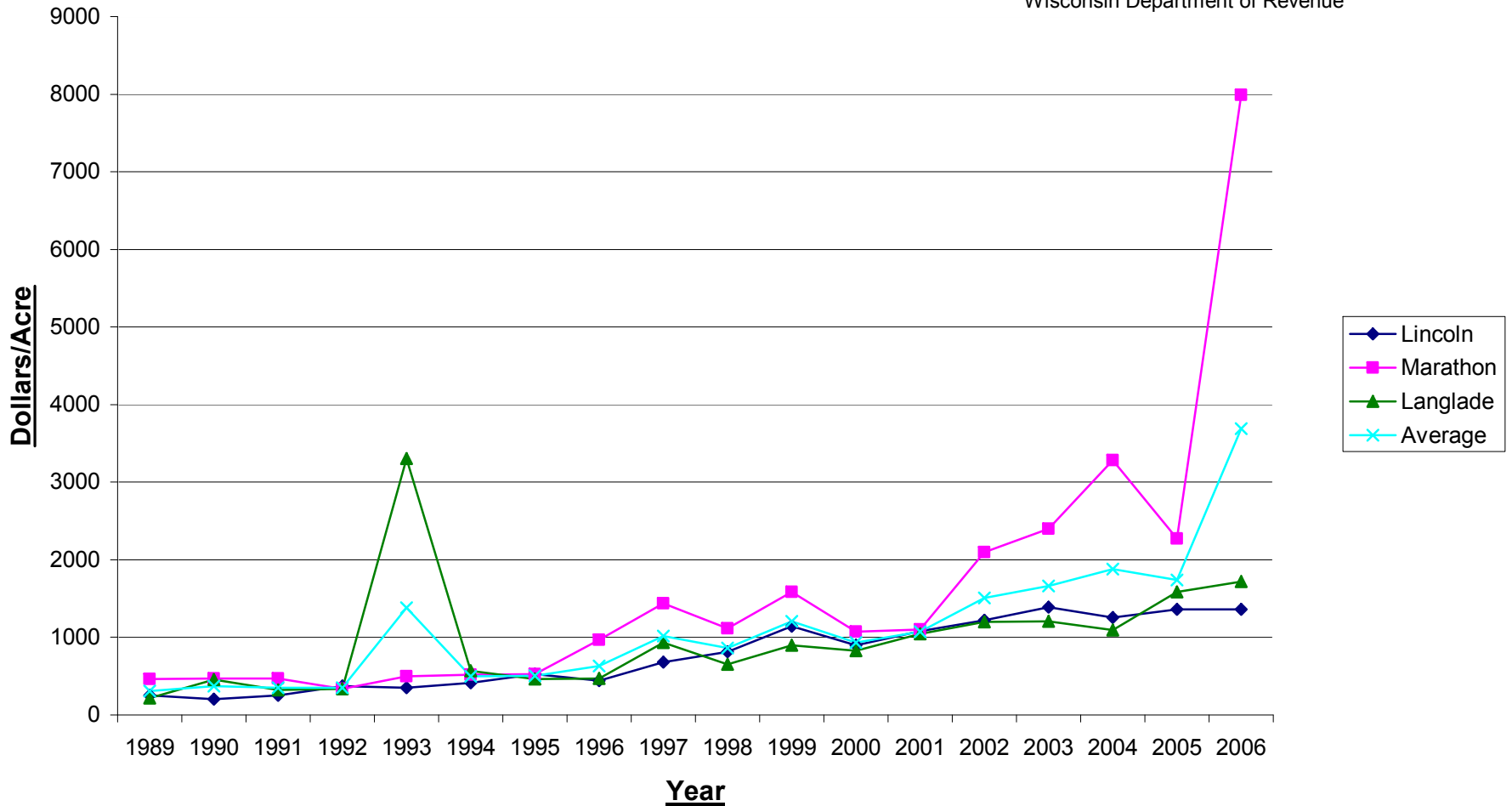


University of Wisconsin, U.S. Department of Agriculture and Wisconsin Counties Cooperating.  
 UW-Extension provides equal opportunities and employment and programming including Title IX and ADA.

**CHART 2: 1989-2006 Sales of All Ag Land  
Without Buildings and Improvements  
Diverted From Agriculture  
In Lincoln, Marathon And Langlade Counties**



Created by Tom Cadwallader  
Ag Development Agent  
Lincoln and Marathon Counties  
Utilizing data from Wisconsin Ag Statistics Service and  
Wisconsin Department of Revenue

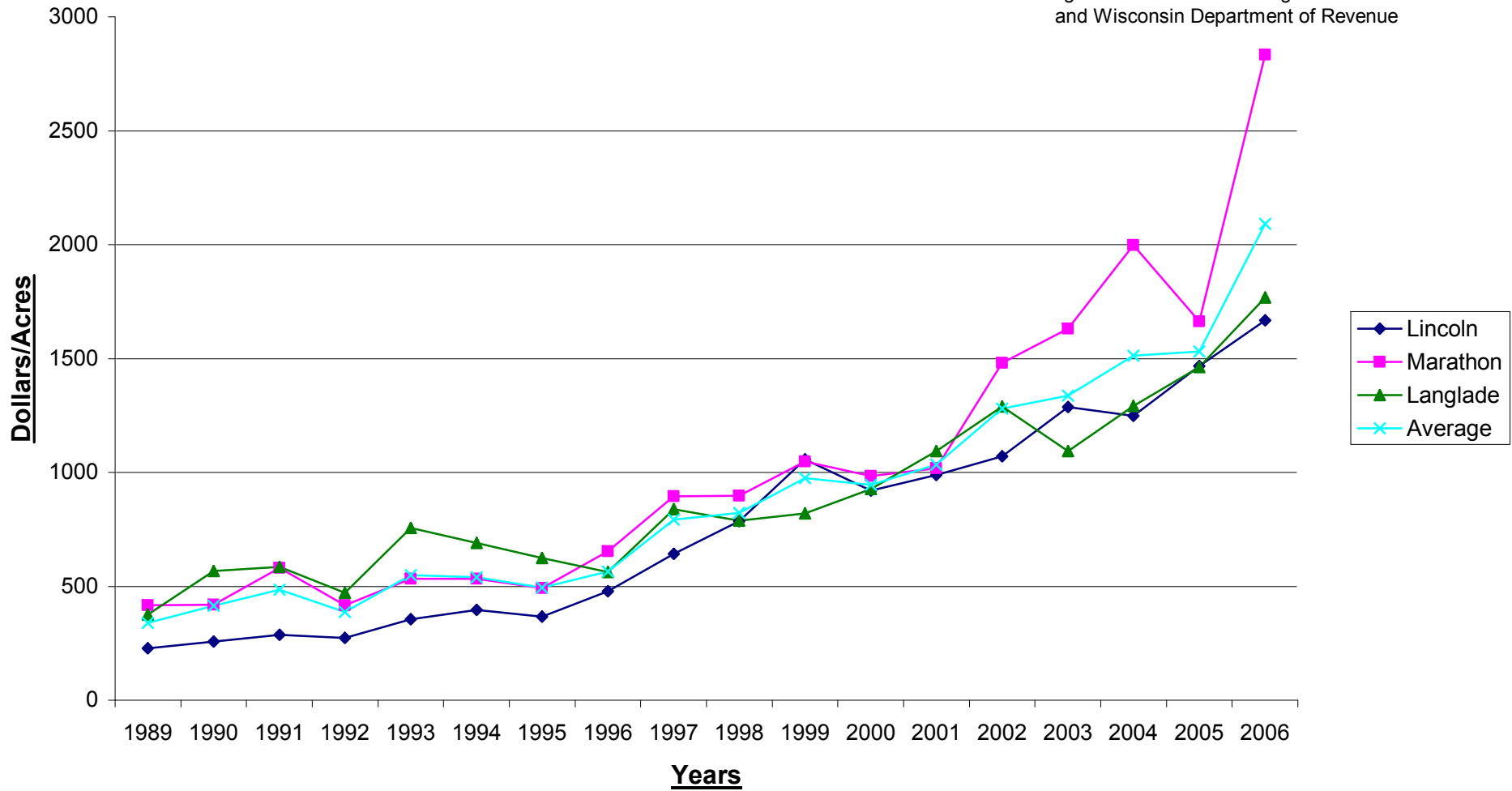


University of Wisconsin, U.S. Department of Agriculture and Wisconsin Counties Cooperating.  
UW-Extension provides equal opportunities and employment and programming including Title IX and ADA

**CHART 3: 1989-2006 Sales of All Ag Land Without Buildings and Improvements In Lincoln, Marathon and Langlade Counties**



Created by Tom Cadwallader  
 Ag Development Agent  
 Lincoln and Marathon Counties  
 Utilizing data from Wisconsin Ag Statistics Service  
 and Wisconsin Department of Revenue



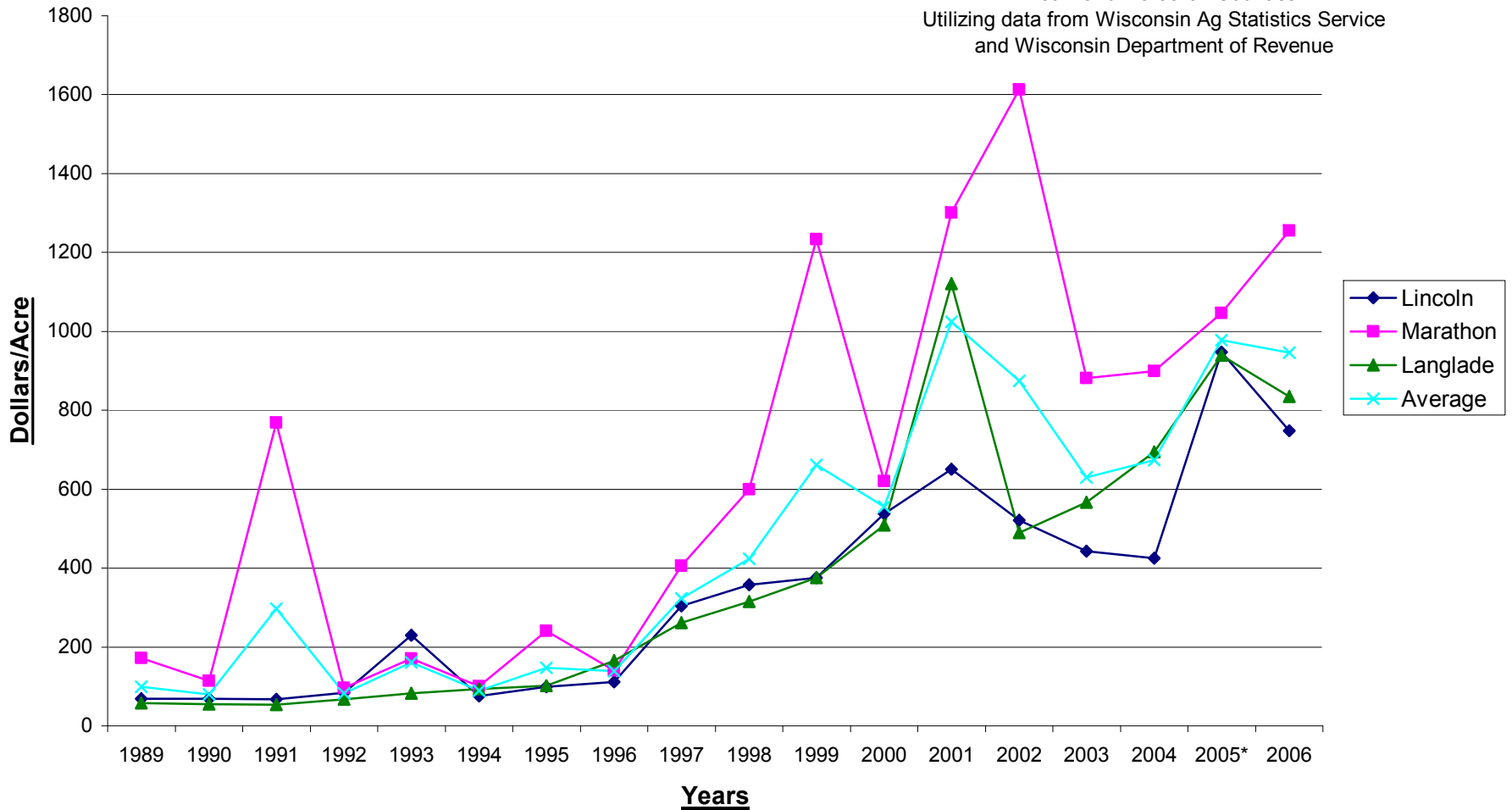
University of Wisconsin, U.S. Department of Agriculture and Wisconsin Counties Cooperating.  
 UW-Extension provides equal opportunities and employment and programming including Title IX and ADA

**Chart 4: 1989-2006 Sales of  
Swamp & Wasteland/Undeveloped Land in  
Lincoln, Marathon and Langlade Counties**



Created by Tom Cadwallader  
Ag Development Agent  
Lincoln and Marathon Counties

Utilizing data from Wisconsin Ag Statistics Service  
and Wisconsin Department of Revenue



University of Wisconsin, U.S. Department of Agriculture and Wisconsin Counties Cooperating.  
UW-Extension provides equal opportunities and employment and programming including Title IX and ADA

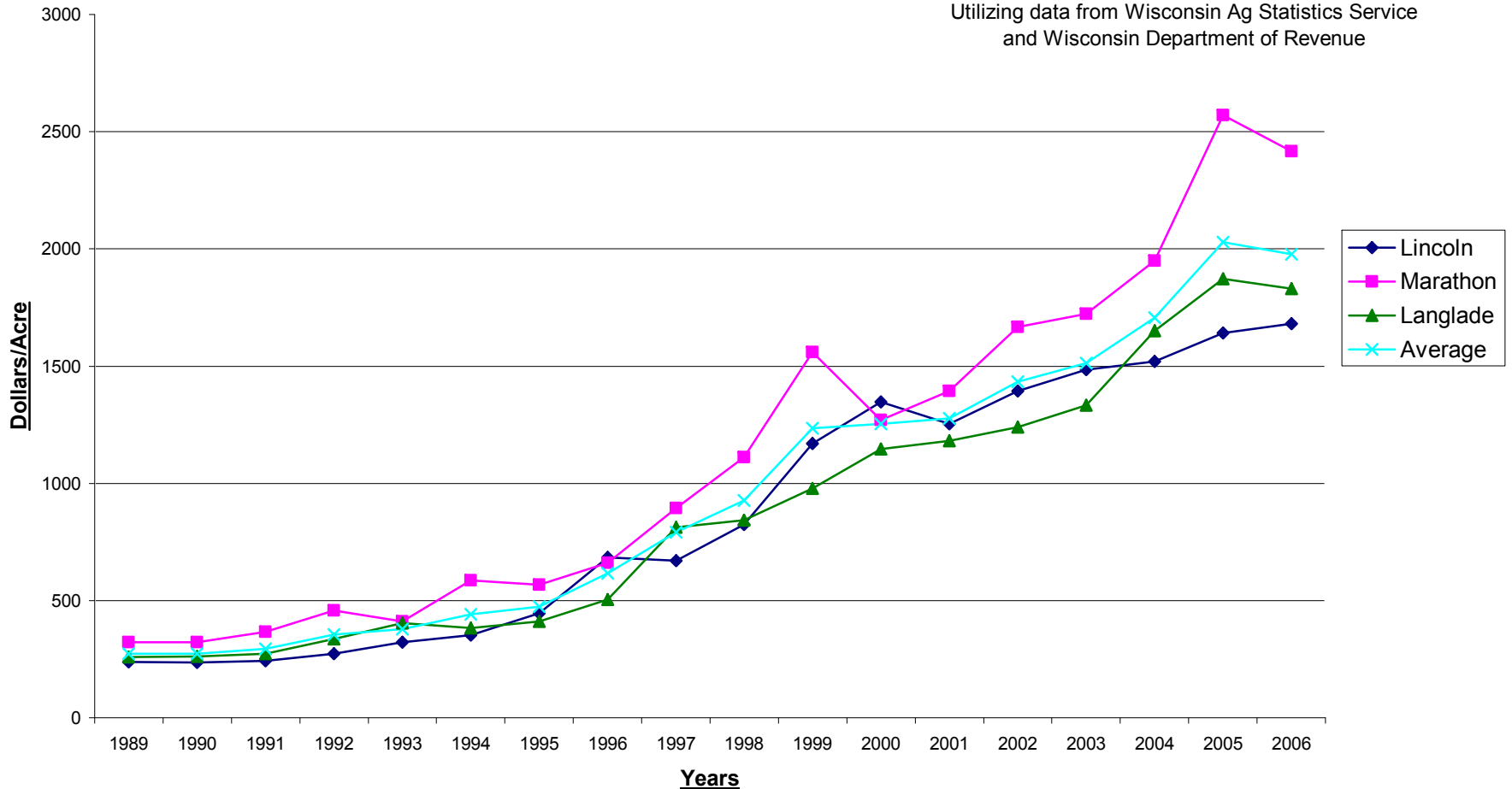
**Chart 5: 1989-2006 Sales of Forest Land that Continued in Forest Land in Lincoln, Marathon and Langlade Counties**



Created by Tom Cadwallader  
Ag Development Agent

Lincoln and Marathon Counties

Utilizing data from Wisconsin Ag Statistics Service and Wisconsin Department of Revenue



University of Wisconsin, U.S. Department of Agriculture and Wisconsin Counties Cooperating.  
UW-Extension provides equal opportunities and employment and programming including Title IX and ADA